

GCheat®

The highest degree.



密封式加热管配密封式接头

GC-tube tubular heaters



GC管的管式加热器

GC-tube tubular heaters

GC管的管式加热器按室温设计成形。因此，它们能用于法兰式加热器、旋入式加热器或流体加热器，以及用于加热模具、工具或板。

GC-tube tubular heaters are designed to be formed at room temperature. Thus, they can be used in flanges, screw-in heaters or flow heaters, as well as for heating moulds and tools or plates.

技术可能性和选项

Technical possibilities and options

- 长度可达3600 mm (Ø 6.5 mm) 或 5100 mm (Ø 8.5和Ø 16 mm)
Lengths up to 3600 mm (Ø 6.5 mm) or 5100 mm (Ø 8.5 and Ø 16 mm)
- 可弯曲
Bendable
- 不同壳体材料
Different sheath materials

应用

Applications

- 法兰式加热器、旋入式加热器和流体加热器
Flange heaters, screw-in heaters and flow heaters
- 流体和气体介质的加热
Heating of fluid and gaseous media

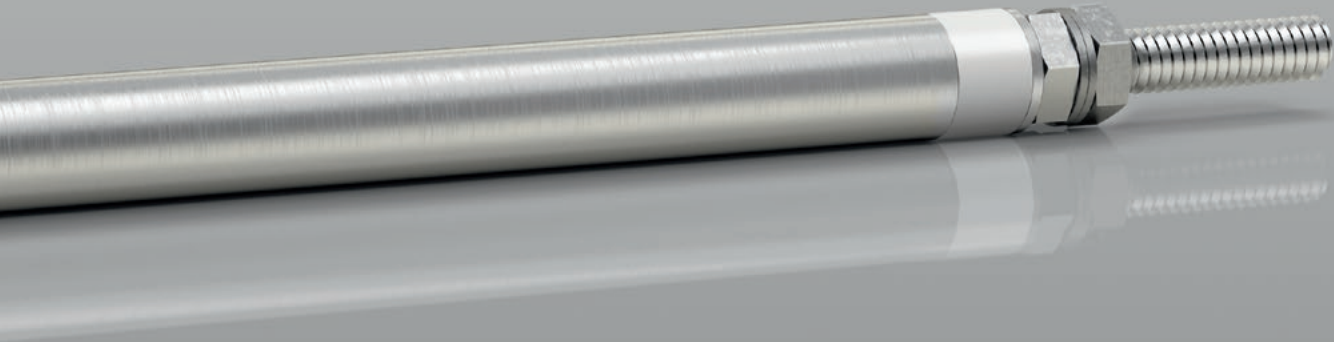
- 模具、工具和板的加热

Heating of moulds, tools and plates

连接形式

Connection types

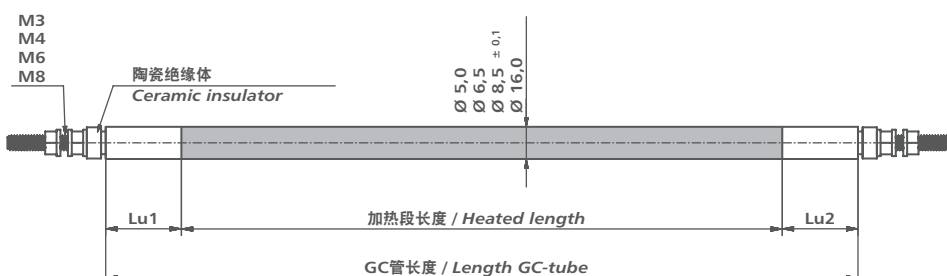
- 螺纹销， M3 / M4 / M6 / M8
Threaded pins, M3 / M4 / M6 / M8
- 光滑销钉
Smooth pins
- 外压接导线
Crimped leads
- 扁平插头
Flat plugs



GC-tube

GC管的管式加热器 GC-tube tubular heater	Ø 5.0	Ø 6.5	Ø 8.5	Ø 16.0
直径公差 Ø tolerance	± 0.1 mm			
直线长度 (L) Straight length (L)	最高温度3000 mm max. 3000 mm	最高温度3600 mm max. 3600 mm	最高温度5100 mm max. 5100 mm	最高温度5100 mm max. 5100 mm
长度公差 Length tolerance	± 2%			
不加热段长度 (Lu) Unheated length (Lu)	最少50 mm min. 50 mm		最少35 mm min. 35 mm	最少50 mm min. 50 mm
弯曲半径, 中间的 Bending radius, from the middle	最少9 mm min. 9 mm		最少13 mm min. 13 mm	最少20 mm min. 20 mm
表面载荷 Surface load	最高温度15 W/cm ² max. 15 W/cm ²			
连接电压 Connection voltage	250 V	230/400 V	230/400 V	230/400/690 V
连接形式 Connection types	M3		M4	M6/M8
壳体材料 Sheath material	2.4068	1.4541, 1.4828 1.4828, 2.4858	1.4541, 1.4571, 1.4828, 2.4858	1.4301, 1.4541, 1.4571
高电压稳定性 (冷态) High-voltage stability (cold)	1000 V (AC)	1250 V (AC)	1500 V (AC)	2500 V (AC)
绝缘电阻 (电压500 V, 冷态, 直流) Insulation resistance (cold at 500 V [DC])	最少5 M欧姆 min. 5 MOhm			

不排除可能的技术变更和错误 Technical changes and errors excepted.



可按客户要求提供其他设计 Other designs available on request.



GC-heat Gebhard GmbH & Co. KG

Industriestraße 34

51545 Waldbröl / Germany

Phone +49 (0)2291 796-0

Fax +49 (0)2291 796-69

www.gc-heat.de

■ made
■ in
■ Germany

