

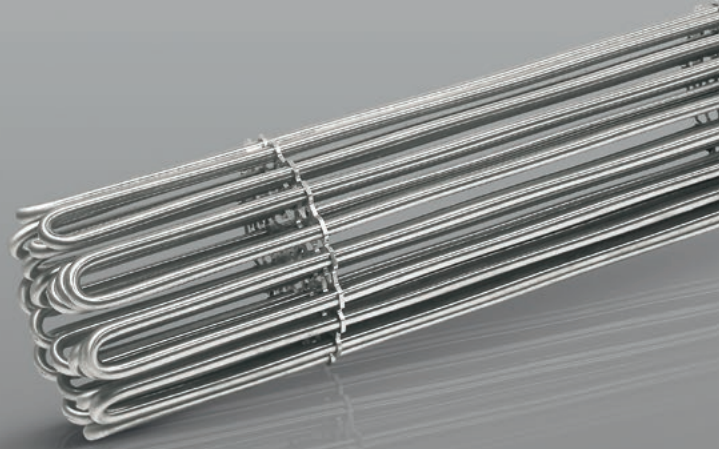
GCheat®

The highest degree.



高密度法兰加热器

GC-flange high-density heating flanges



GC-flange高密度加热法兰

GC-flange high-density heating flanges

紧凑，性能高

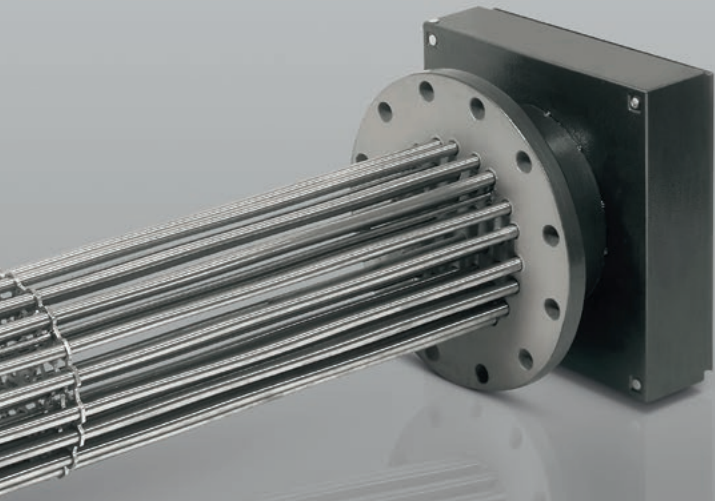
GC-flange高性能法兰提供高性能的电加热，即使是在有限的体积条件下也具有此优点。我们对材料的精心选择和我们的生产、设计和工程能力为寿命长、技术先进、经济性好的方案提供了保证。

GC-flange的加热性能取决于焊接到法兰盘的、8.5 mm或16 mm单根高密度GC管的数量多少。它们以成品交货，带有一个防护类型为IP54或IP65的接线盒。一经要求，也能提供控制器、限制器和其他保护装置。

High performance in limited space

GC-flange high-performance flanges offer high electrical heating performance even under limited volume conditions. A technologically and economically advanced solution with a long lifetime is guaranteed by our careful selection of materials and our production, design and engineering capabilities.

The heating performance of GC-flanges derives from an adjustable number of single high-density GC-tube 8.5 or 16 mm tubular heaters, welded into the flange plate. They are delivered complete with a terminal housing conforming to protection type IP54 or IP65. On demand, controllers, limiters and other protection devices can also be included in the package.



GC-flange

技术可能性和选项

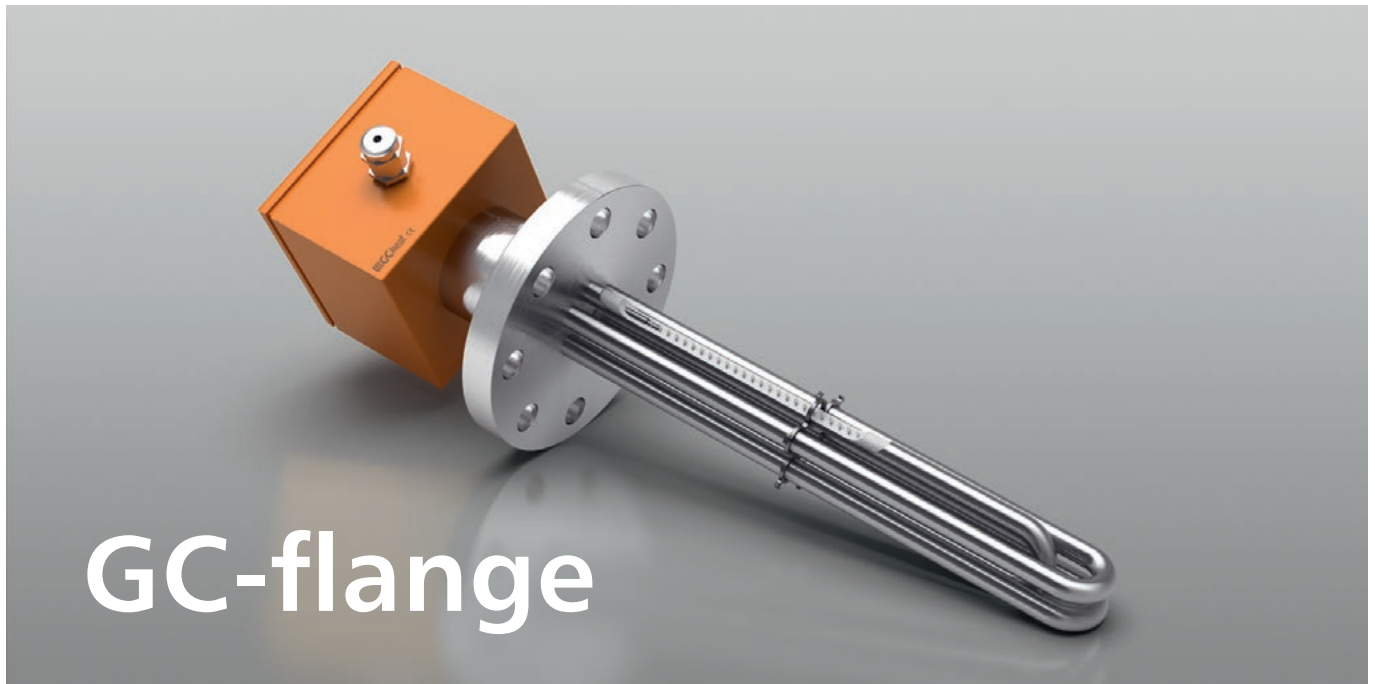
Technical possibilities and options

- 绝热的接线盒
Thermo-insulated connection housing
- 为多路安装散热片，选项
Installation of a fin for the multiway option
- 恒温器、限制器和其他保护装置的安装
Installation of thermostats, limiters and other protection devices
- 也可提供防爆型产品
Also available in explosion-proof version
- 准备好连接
Ready for connecting

应用

Applications

- 原水加热
Raw water heating
- 循环热水加热
Recirculating hot-water heating
- 油热炉
Oil heat carrier
- 蒸汽发生器和蒸汽过热器
Steam generation and steam superheating
- 沥青和油加热
Bitumen and oil heating
- 空气加热
Air heating
- 工业加工工程和电器制造业的其他应用
Other applications in industrial processing engineering and the manufacture of apparatus



GC-flange高密度加热法兰

GC-flange high-density heating flanges

加热元件 (GC管)

Heating element (GC-tube)

- GC管高密度管式加热器,
Ø 16 mm / Ø 8.5 mm
*GC-tube high-density tubular heaters,
Ø 16mm / Ø 8.5 mm*
- U形弯曲
U-formed bend
- 焊接在法兰盘
Welded in flange plate
- 连接处用硅胶或环氧树脂封装防湿
*Connection protected against humidity with silicone
or epoxy resin*
- 不锈钢1.4301、1.4541、1.4571、1.4828、2.4858
Stainless steel 1.4301, 1.4541, 1.4571, 1.4828, 2.4858

插入长度

Immersion length (IL)

- 冷却段裸露长度 (最多2350mm IL)
Cooling length open (max. 2350 mm IL)
- 冷却段封闭长度, 选项
Cooling length closed, optional

法兰盘

Flange plate

- 符合DIN / ANSI
Acc. to DIN / ANSI
- 钢 H II P265 GH (1.0425)、C.22-8
Steel H II P265 GH (1.0425), C.22-8
- 不锈钢1.4541、1.457
Stainless steel 1.4541, 1.457
- 依照指令97/23/EG和AD 2000生产
Production as per directive 97/23/EG and AD 2000

冷却长度

Cooling length

- 在法兰盘和接线盒之间降低温度, 对接线盒中的电气元件提供热保护
*Between flange plate and terminal housing to decrease
the temperature, providing thermal protection of the
electrical parts in the housing*

接线端盒

Terminal housing

- 表面喷塑的钢或不锈钢
Powder-coated steel or stainless steel
- 防护类别IP54或IP65
Protection type IP54 oder IP65
- 也可提供防爆型产品
Also available in explosion-proof version
- 按客户要求提供不同的加热段
Different heating zones as per customer request

焊接

Welding

- 经TÜV测试的焊接操作
TÜV-tested welding operators
- 依照HP0和DIN EN 729-2的焊接许可
Welding license as per HP0 and DIN EN 729-2

导板

Guiding plates

- 不锈钢制成的导板保证炉管束的稳定
Guiding plates made from stainless-steel guarantee a stable nest of boiler tubes
- 可用激光切割制成各种板形
Individual forms possible with laser-cut plates

置换管

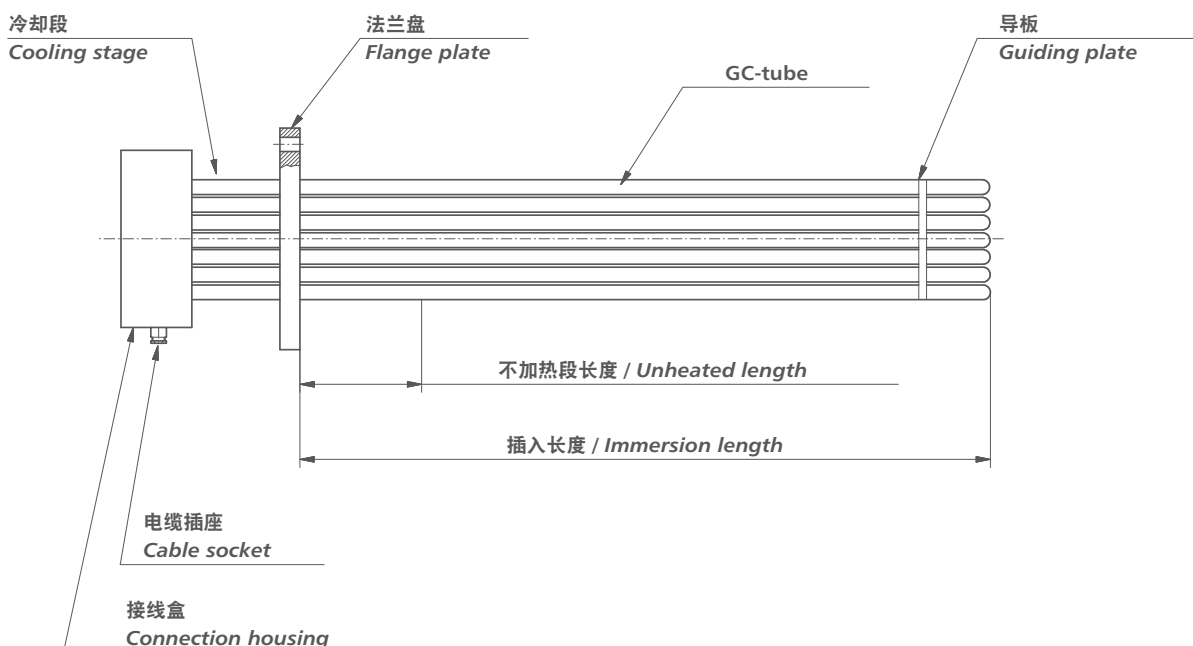
Displacement tubes

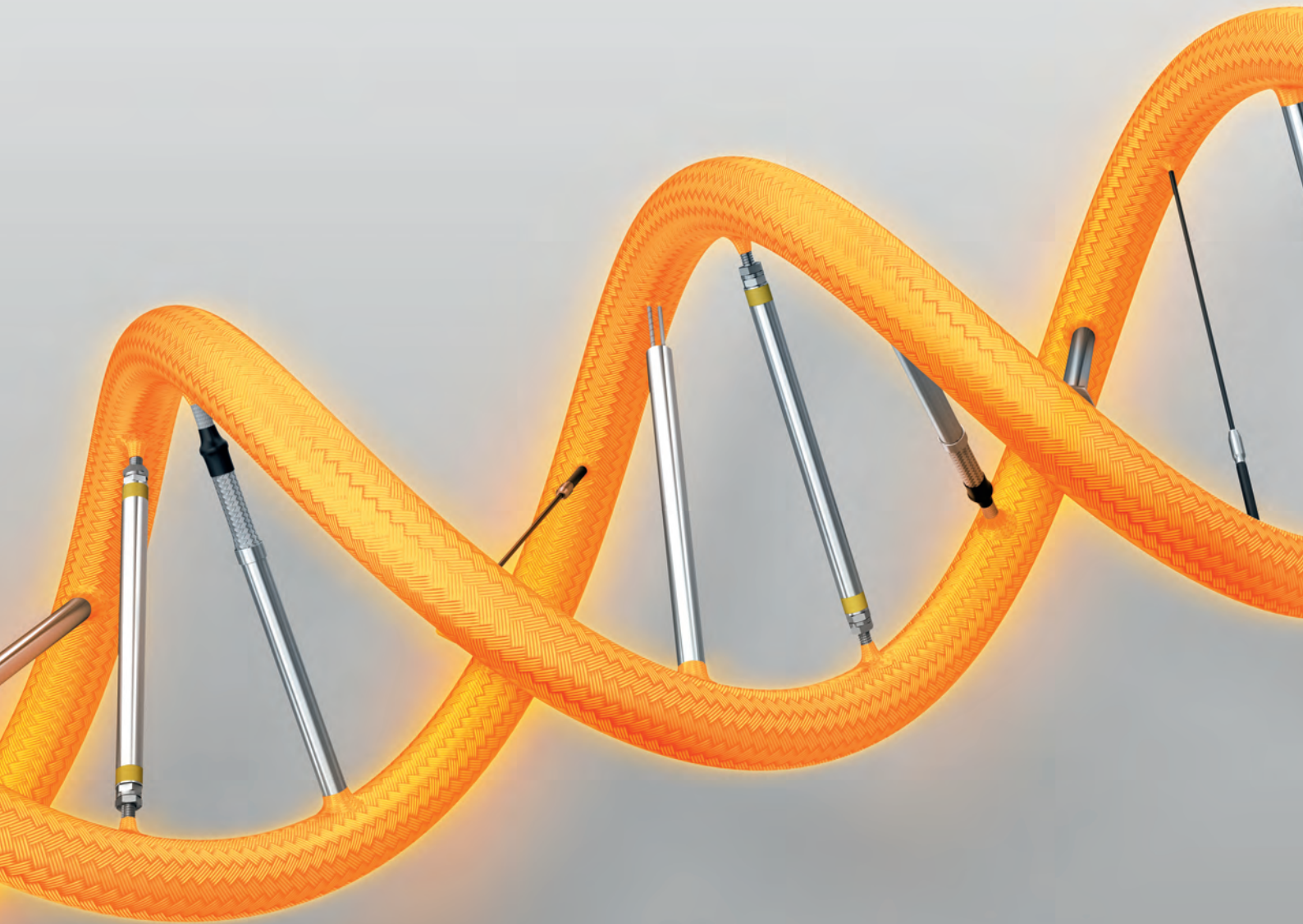
- 置换管用在小的内径中以改善速率，特别是在热油加热系统中。
Displacement tubes are used in small interior diameters to improve the flow velocity, especially in thermal oil heating systems
- 使用各种元件可以优化流量：置换管、横向导板、纵向导板
Flow optimisation possible using various elements: displacement pipes, transverse baffles, longitudinal baffles

布线

Cabling

- 已布好线，可立即安装
Cabling is ready for installation
- 能由不同的段组成
Different zones possible
- 可提供无卤型产品
Halogen-free version available





GC-heat Gebhard GmbH & Co. KG
Industriestraße 34
51545 Waldbröl
Germany
Phone +49 (0)2291 796-0
info@gc-heat.de
gc-heat.de

GC-heat Technology (Kunshan) Co. Ltd
No. 329, Jujin Road, Zhangpu Township
215321 Kunshan
P. R. of China
Phone +86 (0)512 8788 0081
sales@gc-heat.cn
gc-heat.cn

■ made
■ in
■ Germany

