

GCheat®

The highest degree.



给热流道使用的加热圈合金套装

GC-slide heating element for hot runner systems



GC-slide——装配简单、安装耐用、不需额外工具

GC-slide – easy assembly and durable fit without additional tools

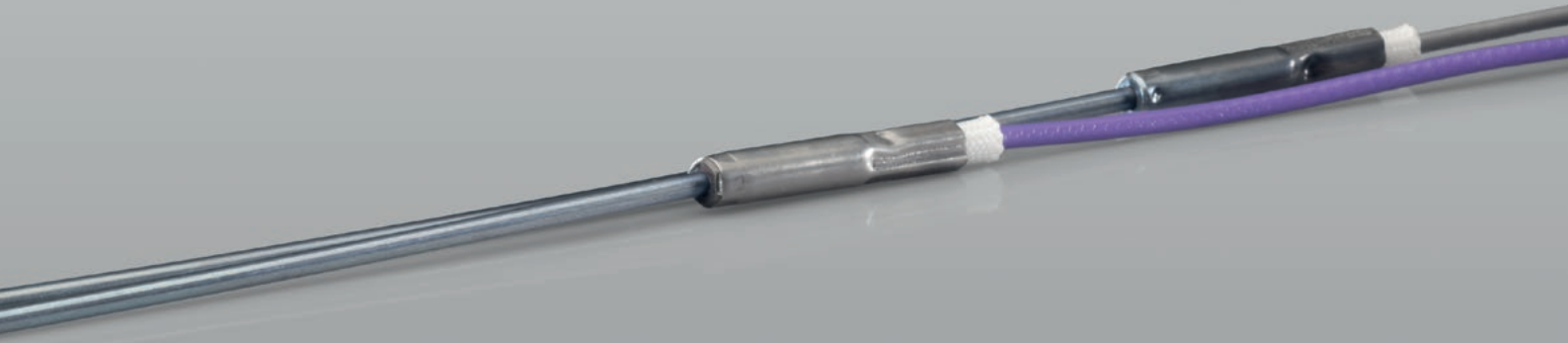
对于有效的加热，我们的巧妙方案是GC-slide——一种热流道系统专用的特殊小巧的加热元件。不像传统的、设计用于保证线圈式加热器牢固压在热流道喷嘴上的夹紧机构，GC-slide不会快速达到它的极限。

Our smart solution for effective heating is the GC-slide, a special compact heating element for hot runner systems. Unlike conventional clamping mechanisms designed to ensure that coil heaters sit firmly on hot runner nozzles, the GC-slide does not quickly reach its limits.

您的目标

Your objectives

- 马上就可安装到喷嘴上，并且始终与喷嘴配合完美
A ready-to-install unit for a continuously perfect fit on the nozzle
- 使用寿命长
A long lifespan
- 安装简单，不需额外工具
Easy installation without additional tools
- 整个加热元件采用薄壁设计
Thin-walled design of the complete heating element



GC-slide

将加热元件插入薄壁套，使加热元件装入夹紧件成为一体，并用开槽的金属套提供支撑。该金属套有内锥，以便整个元件（它比喷嘴略小）自动对中并能被轻易地推上喷嘴。盘绕压缩的加热元件保证与喷嘴的最佳热接触，即使外部的径向接触压力也很低。盘绕方式是精确设计的，以适合热流道喷嘴的具体热量要求。

The heating element is integrated into the clamping element by being inserted into a thin-walled jacket and supported by slotted ferrules. The ferrules have an inner cone so that the complete component (which is slightly smaller than the nozzle) centres itself and can be easily pushed onto the nozzle. The coiled and pressed heating element ensures optimum heat contact with the nozzle, even if the external radial contact pressure is low. The coiling scheme is precisely designed to suit the specific heat requirements of the hot runner nozzle.

装配简单，不需额外工具。

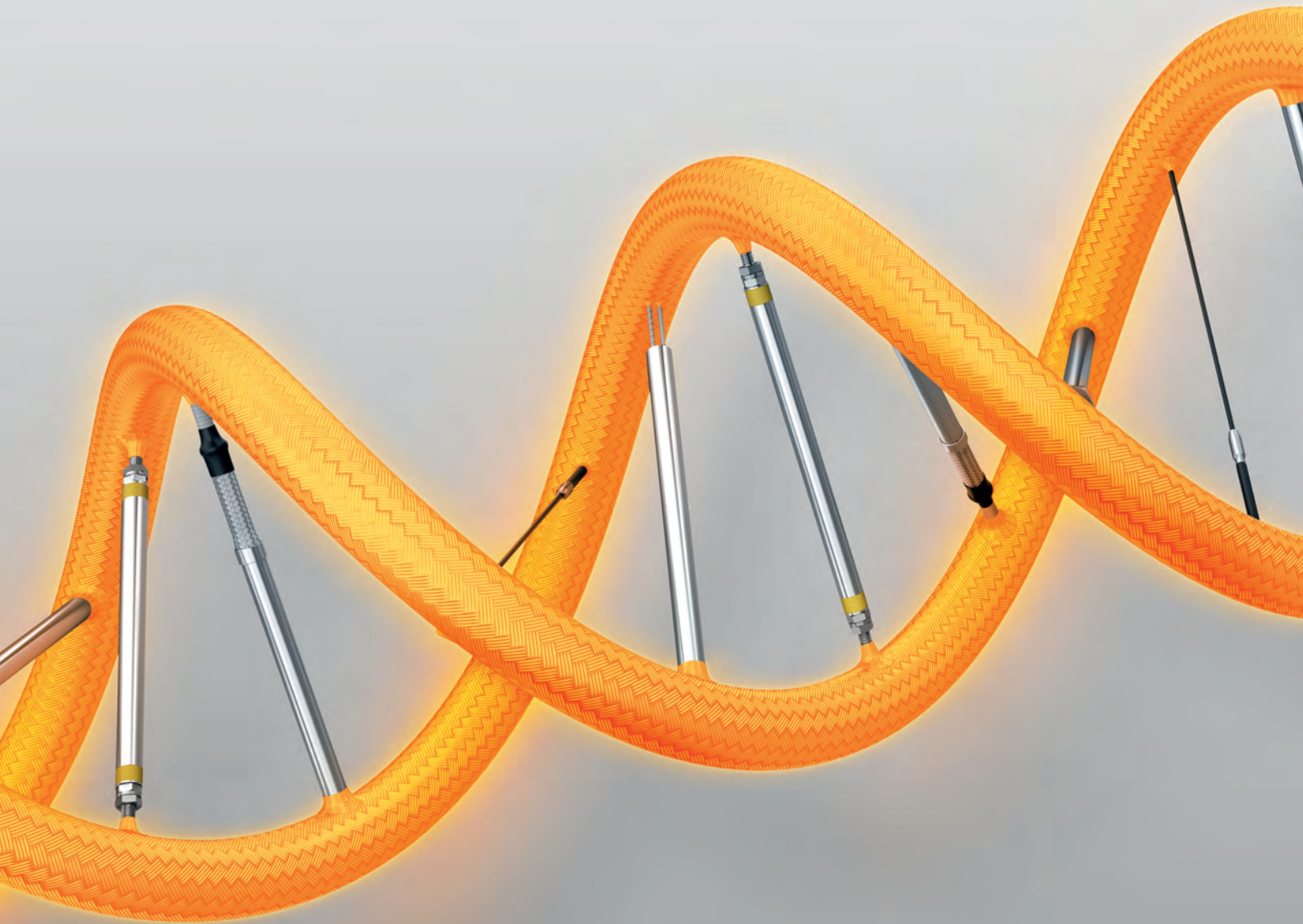
The assembly is easy and does not require an additional tool.

- GC-slide有如下的加热元件可供使用：
1.0 x 1.6 / 1.3 x 2.3.
GC-slide is available with the following heating elements: 1.0 x 1.6 / 1.3 x 2.3.
- 预留的槽口使您能够插入一根外置热电偶。
The free slot offers you the possibility of inserting an external thermocouple.

优势

The advantages

- 组件紧凑
Compact component
- 装配不需额外的工具
Assembly without additional tool
- 安装快
Quick installation
- 牢固紧贴在喷嘴上
Durable fixing on the nozzle
- 薄壁设计
Thin-walled design



GC-heat Gebhard GmbH & Co. KG
Industriestraße 34
51545 Waldbröl
Germany
Phone +49 (0)2291 796-0
info@gc-heat.de
gc-heat.de

GC-heat Technology (Kunshan) Co. Ltd
No. 329, Jujin Road, Zhangpu Township
215321 Kunshan
P. R. of China
Phone +86 (0)512 8788 0081
sales@gc-heat.cn
gc-heat.cn

■ made
■ in
■ Germany

